

# School Safety

K-12





Adjustable band for children 4 – 12 years of age

**DELUXE CHILD'S FACE SHIELD**  
S100378  
PACK OF 50



Adjustable band for children 4 – 12 years of age

**STANDARD FACE SHIELD**  
S100379  
PACK OF 50



**DELUXE FACE SHIELD**  
S100152  
PACK OF 50



**STANDARD FACE SHIELD**  
S100286  
PACK OF 50



**EAR PROTECTORS**  
S100255K  
PACK OF 200



**CUSTOM PRINTED EAR PROTECTORS**  
S100255V  
PACK OF 800  
PACK OF 1,500  
PACK OF 5,000

**Face Shield Information:**

This product has been authorized by FDA under an EUA dated April 18, 2020 and updated April 24, 2020 for use as source control by the general public as well as by HCP in healthcare settings as to help prevent the spread of infection or illness during the COVID-19 pandemic. The product has not been FDA cleared or approved and is authorized only for the duration of the declaration that circumstances exist justifying the authorization of the emergency use of medical devices, including alternative products used as medical devices, during the COVID-19 outbreak, under section 564(b)(1) of the Act, 21 U.S.C. § 360bbb-3(b)(1) unless the authorization is terminated or revoked sooner. This product is a Face Mask (Face Shield).

For more product details, visit our website at <https://beistlesafety.com/compliance/>.



**CLEAR SCHOOL DESK SHIELD W/ CORNER STRIPS**  
**S100356VC** 23" Wide x 23" Tall; Side 12"  
**PACK OF 6**



**CLEAR SCHOOL DESK SHIELD**  
**S100356VCH** 23" Wide x 23" Tall; Side 12"  
**PACK OF 6**

**FITS A 30" TABLE**



**4 WAY TABLE DIVIDER**  
**S100391** 30" Wide x 23.5" Tall  
**PACK OF 1**

**FITS A 48" TABLE**



**4 WAY TABLE DIVIDER**  
**S100388** 46.5" Wide x 23.5" Tall  
**PACK OF 1**

**FITS A 30" TABLE**



**LUNCH TABLE DIVIDER**  
**S100389** 46.5" Long x 23.5" Tall x 30" Wide  
**PACK OF 1**

**FITS A 24" TABLE**

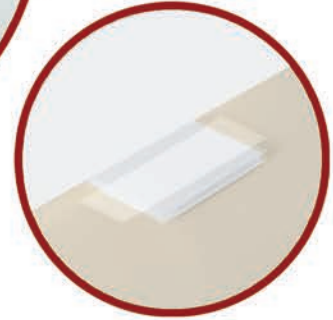


**LUNCH TABLE DIVIDER**  
**S100392** 46.5" Long x 23.5" Tall x 24" Wide  
**PACK OF 1**





**BUILT IN  
MASK HOLDER**



**SECURE THE SHIELDS  
TO THE DESK BY ADDING  
TAPE TO THE TABS**



**BLANK DESK TOP SHIELD**  
S100356VW 23" Wide x 23" Tall; Side 12"  
PACK OF 30



**LET YOUR STUDENTS  
DECORATE THEIR OWN**



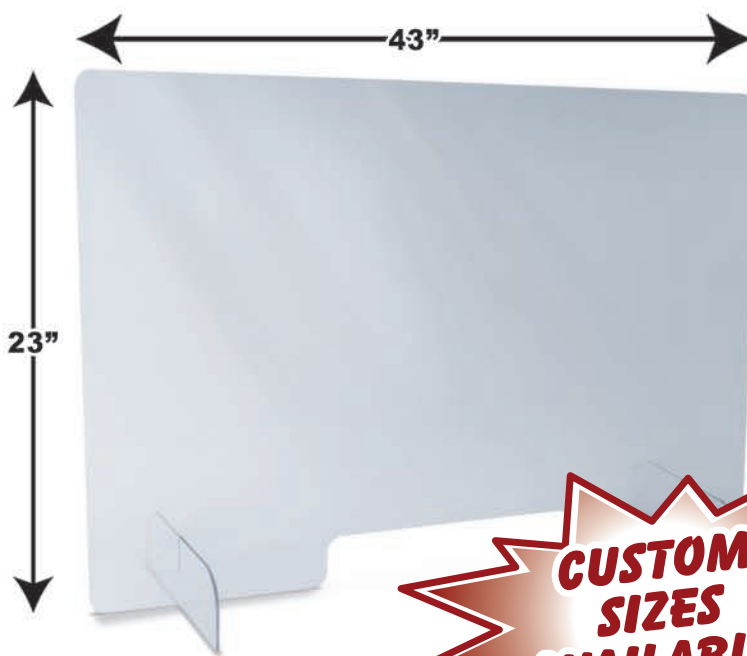
**DESK TOP SHIELD W/ FREE CUSTOMIZATION**  
S100356V 23" Wide x 23" Tall; Side 12"  
PACK OF 12



**PERSONALIZED WITH YOUR  
SCHOOL LOGO OR  
SOLID COLORS**



**MASK HOLDERS W/ FREE  
CUSTOMIZATION**  
S100359V 8.5" Tall x 6.25" Wide  
PACK OF 35



**CLEAR SHIELD**  
S100355 43" Wide x 23" Tall  
PACK OF 5







**BE SMART  
FLOOR TOTEM DISPLAYS**  
S100339V 17.5" Wide x 58" Tall  
PACK OF 5



**HAND WASHING  
FLOOR TOTEM DISPLAYS**  
S100340V 17.5" Wide x 58" Tall  
PACK OF 5



**BE SMART  
FLOOR DISPLAYS PROP**  
S100353V 72" Tall  
PACK OF 6





**HAND WASHING  
REMOVABLE CLINGS**  
S100349I 5" X 5"  
PACK OF 48



**BE SMART  
(A) STRING BANNER**  
S100341HP 6" X 70"  
PACK OF 12

**HAND WASHING  
(B) STRING BANNER**  
S100342HP 6" X 70"  
PACK OF 12



**BE SMART  
PAPER WALL SIGNS**  
S100347HP 11.5" X 15.25"  
PACK OF 48



**HAND WASHING  
PAPER WALL SIGNS**  
S100348HP 11.5" X 15.25"  
PACK OF 48





**BE SMART  
CARDBOARD CEILING SIGNS**  
S100343V 12" X 12"  
(Hardware is included)  
PACK OF 12



Ceiling Sign Hardware



**HAND WASHING  
CARDBOARD CEILING SIGNS**  
S100344V 12" X 12"  
(Hardware is included)  
PACK OF 12



**BE SMART  
CEILING WHIRLS**  
S100345HP 17"  
PACK OF 72



**HAND WASHING  
CEILING WHIRLS**  
S100346HP 17"  
PACK OF 72



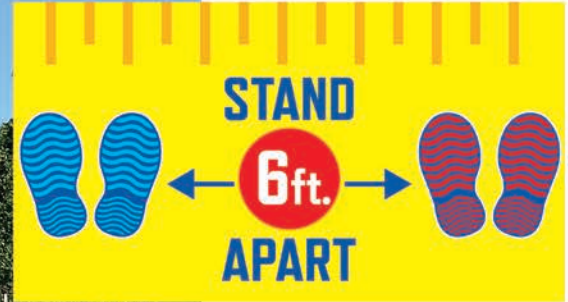


FACE MASK REQUIRED  
REMOVABLE CLINGS  
S100386I 5" X 5"  
PACK OF 48



FACE MASK REQUIRED PAPER WALL SIGNS  
S100387HP 11.5" X 15.25"  
PACK OF 48





PAPER BUS SIGNS  
S100354HP 22" X 12"  
PACK OF 48



BUS PROP  
S100360V 60" x 45" Corrugated Plastic  
PACK OF 1





**SOCIAL DISTANCING  
FLOOR TOTEM DISPLAYS**  
S100364IV 17.5" Wide x 58" Tall  
PACK OF 5



**SOCIAL DISTANCING  
FLOOR DISPLAYS PROP**  
S100364V 72" Tall  
PACK OF 6







Ceiling Sign Hardware



**SOCIAL DISTANCING  
CARDBOARD CEILING SIGNS**  
S100366V 12" X 12"  
(Hardware is included)  
PACK OF 12

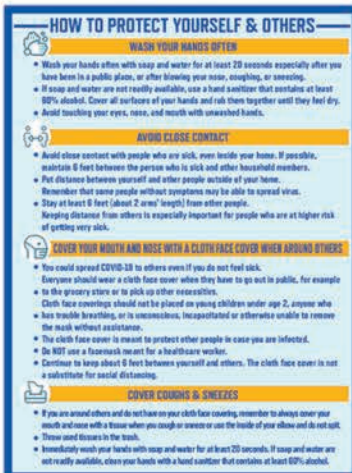


**HAND WASHING  
CARDBOARD CEILING SIGNS**  
S100367V 12" X 12"  
(Hardware is included)  
PACK OF 12



**SOCIAL DISTANCING  
REMOVABLE CLINGS**  
S100368I 5" X 5"  
PACK OF 48

**HAND WASHING  
REMOVABLE CLINGS**  
S100369I 5" X 5"  
PACK OF 48



**SOCIAL DISTANCING  
PAPER WALL SIGNS**  
S100365HP 11.5" X 15.25"  
PACK OF 48





**WELCOME BACK SIGN BANNER** (1/Pkg.)  
**57642** 5' x 21" (All-Weather w/4 Grommets)  
**PACK OF 12**



**SCHOOL DAYS BANNER SET** (1/Pkg.)  
**54889** 5½" x 9" (Printed 2 Sides)  
 (Assembly Required)  
**PACK OF 12**



**BACK TO SCHOOL PAPER SIGN**  
**55824** 18" x 25" (Printed 2 Sides)  
**PACK OF 12**



**JUMBO PENCIL PAPER SIGNS**  
**53445** 32"  
 (Printed 2 Sides w/Different Designs)  
**PACK OF 48**

## Education Solutions

# School Safety K-12

We are dedicated to providing a safe environment for learning. Our safety products are designed to help stop the spread of germs through social distancing, hand washing, and protective equipment.

Contact your Beistle representative to determine how to start protecting your students, teachers, and staff today.

[www.beistlesafety.com](http://www.beistlesafety.com)

The Beistle Company  
[www.beistlesafety.com](http://www.beistlesafety.com)  
717-532-2131

© 2020 The Beistle Company All rights reserved. Beistle, The Beistle Company, and their respective logos are trademarks of The Beistle Company and may not be used without permission.

