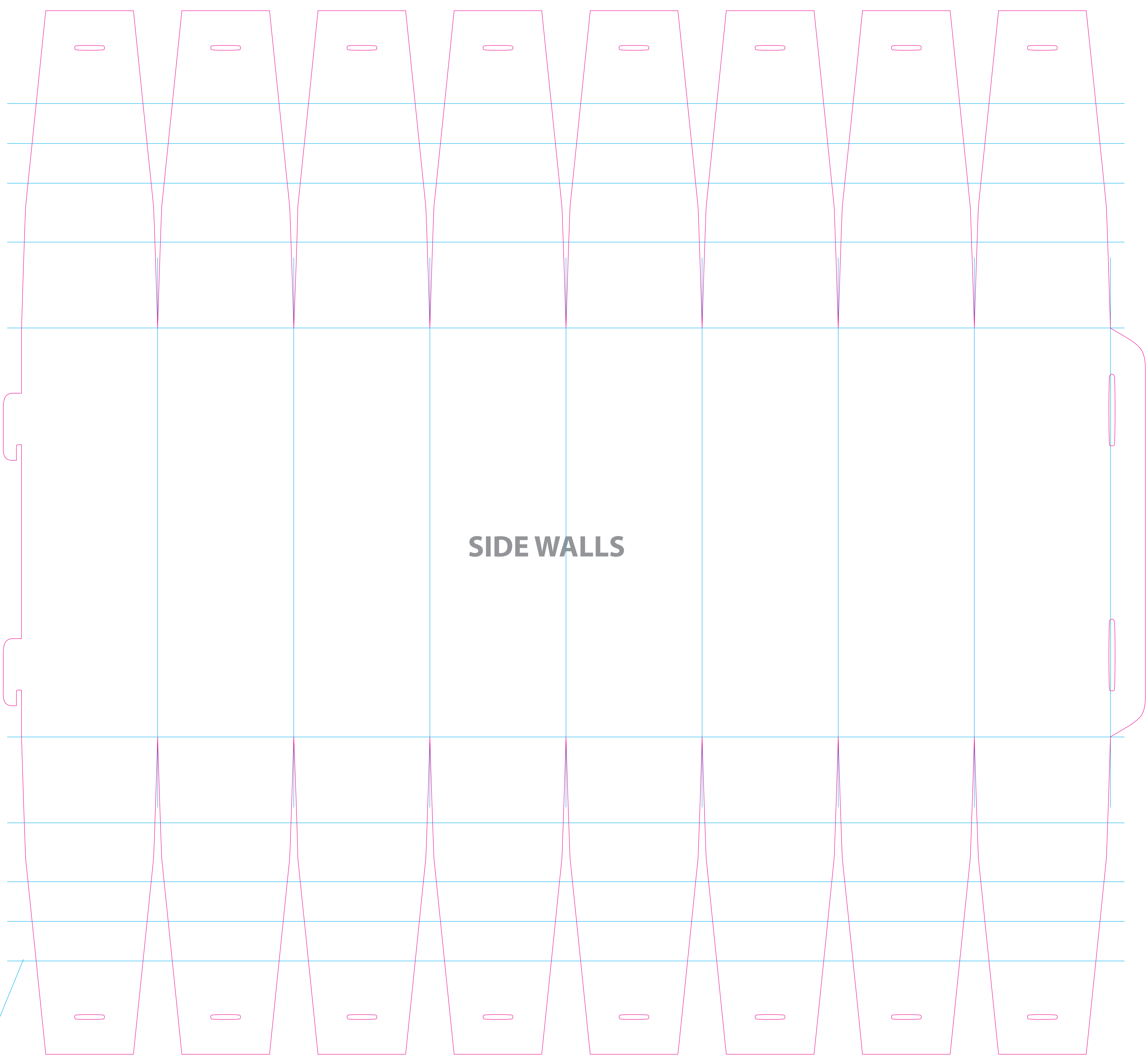


SIDE WALLS



SIDE WALLS

CREASE

**ART NEEDS TO INCLUDE 1/4" BLEED.  
ART SHOULD HAVE 1/4" SAFETY  
MARGINS IN FROM THROUGH  
CUT TO ENSURE IT  
IS NOT CROPPED OFF  
DURING CUTTING  
PROCESS AFTER  
PRINTING.**

BARREL TOP

BARREL BOTTOM

THROUGH CUT

